

CERTIFICATE OF LOCATION OF GOVERNMENT CORNER

NORTHEAST Corner of Section 8, Township 106, Range 39, 5TH P.M.

STATE OF MINNESOTA, County of MURRAY

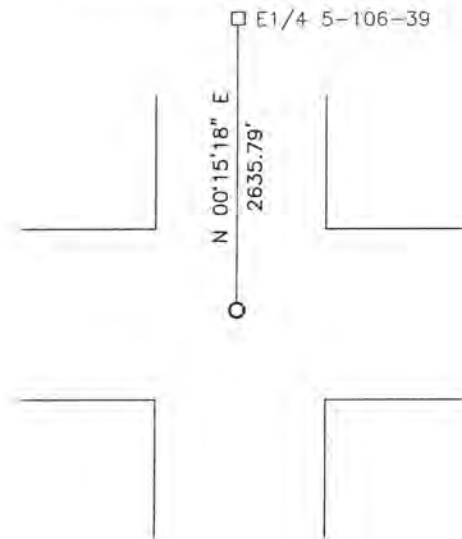
At the corner location shown on the sketch:

On 11/9/16 found a PK nail
DATE

left monument as found, lowered monument, removed monument (explain)

On _____ placed a _____
DATE

SKETCH OF REFERENCE TIES



Minnesota State Plane Coordinate
System Murray County Datum
NAD83 (1996)

N: 158390.783
E: 558855.239

Statement of evidence relative to this corner location is on back of page.

I hereby certify that this document and the data contained herein was prepared by me or under my direct supervision


SIGNATURE

1/30/17
DATE

Registration No. 43844

- Land Surveyor, Professional Engineer
 County Surveyor, County Engineer

OFFICE OF THE COUNTY RECORDER

County of MURRAY

I hereby certify that this document was filed in the Co. Recorders office at 9:00 A.M on the 17TH day of FEBRUARY A.D. 2017

County Recorder Evelyn C. Larson

By _____, Deputy

DOCUMENT NO. _____

Statement of Evidence

In 1861, Willman and Smoot did the original subdivision of the township.

On June 6, 1985, B.W. Woolstencroft recorded a stake mound and pit at the corner.

In 1985, the Murray County Highway Department found a steel pin at the corner.

On March 30, 2005, Zieske Land Surveying found an iron monument at the corner.

On July 12, 2006, Zieske Land Surveying found a PK nail set by Murray County Highway Department at the corner.

On November 9, 2016, Bueltel-Moseng Land Surveying found a PK nail by using Murray County Highway Department coordinates.